



## Home Features

4 Bedrooms • 3.5 Bathrooms

The Shay has an extremely open first floor, with a massive dining, living and kitchen space. A proper study and library create unique spaces. A sumptuous master suite can be found on the second floor, along with 3 additional bedrooms, laundry and plenty of space.

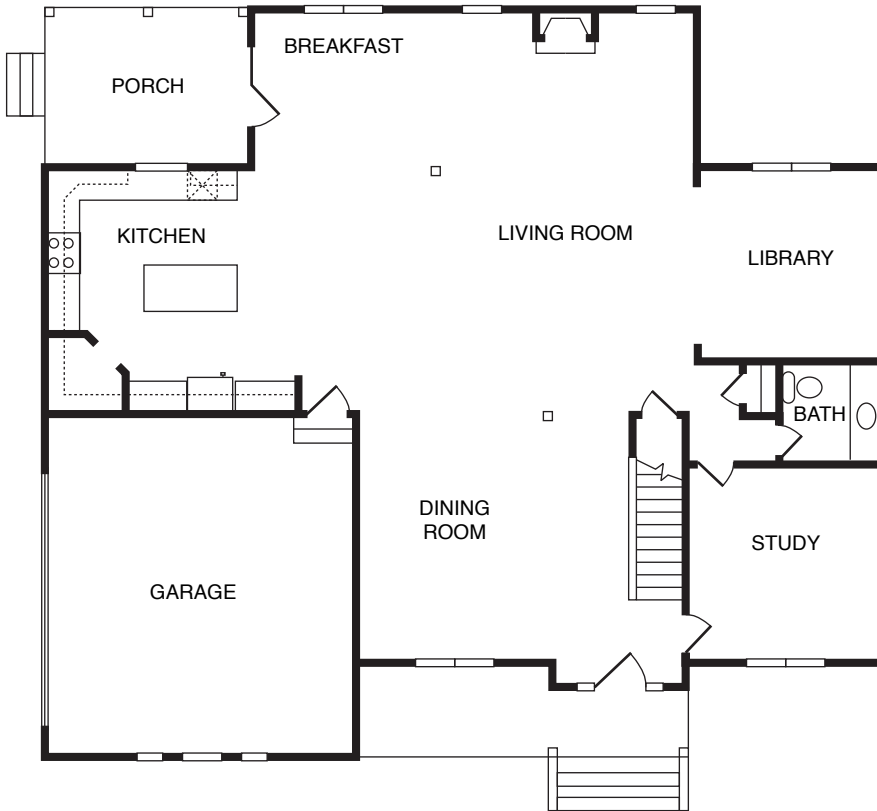
## Home Square Footage

First Floor...	1,706 sq. feet
Second Floor...	1,795 sq. feet
Garage Area...	447 sq. feet
<hr/>	
Total...	3,501 sq. feet

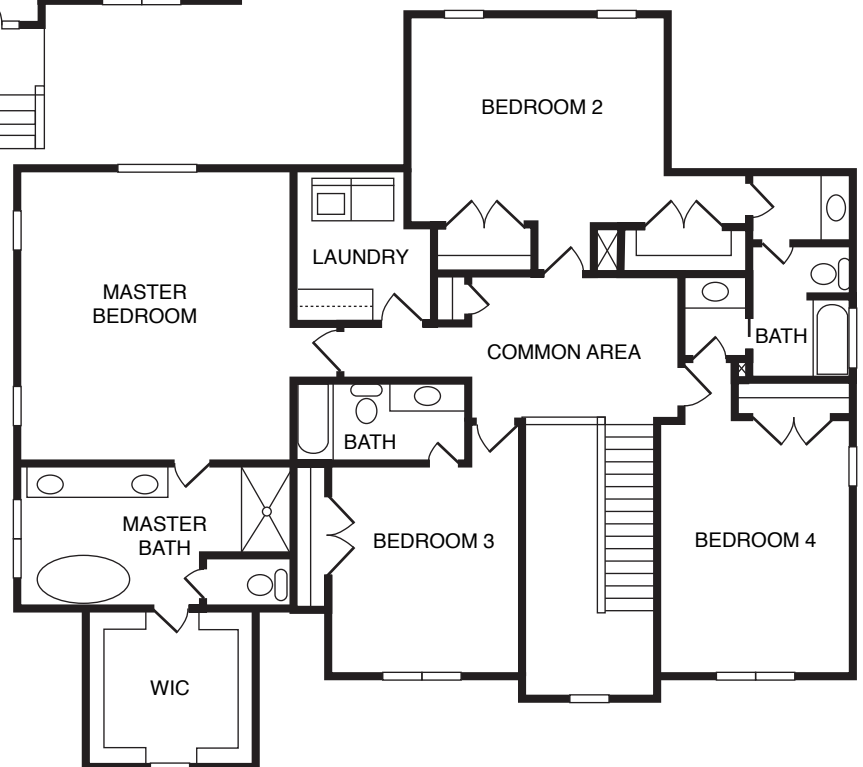
*This information is deemed reliable but not guaranteed. All details and illustrations are approximate and may vary from actual plans and specifications. 3/4/15*

# The Shay

## First Floor



## Second Floor



*This information is deemed reliable but not guaranteed. All details and illustrations are approximate and may vary from actual plans and specifications. 3/4/15*